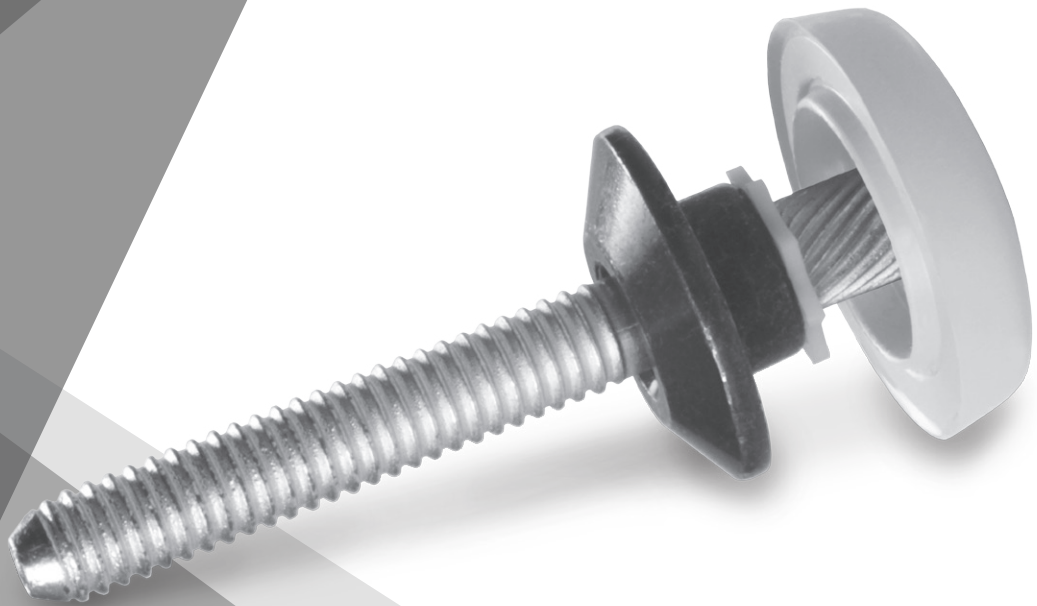




ARCONIC

Hucktainer[®] Selection Chart



HUCK[®]

Table of Contents

Hucktainer® Pins

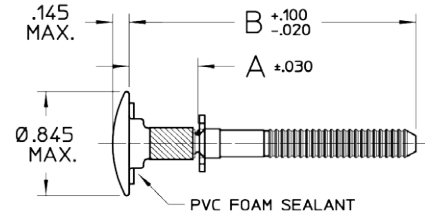
HLP MC Pins for Metal Clad Applications	4 - 5
Standard HLP Pins for FRP Applications	6 - 15

Hucktainer® Nose Assemblies

Hucktainer® Nose Assemblies	16
-----------------------------------	----

Hucktainer® Pins

HLMC Pins for Metal Clad Applications



HLMC-R12-()PL
UNENCAPSULATED LOW PROFILE
HEAD FOR METAL CLAD APPLICATIONS

Steel Head, No Encapsulation, with PVC Seal

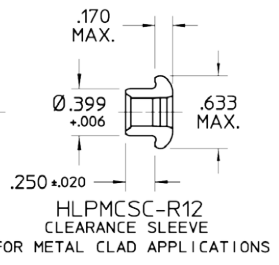
Part Number	Grip Range	"A"	"B"
HLMCP-R12-5PL	0.250-0.375	0.400	2.055
HLMCP-R12-6PL	0.312-0.437	0.462	2.118
HLMCP-R12-7PL	0.375-0.500	0.525	2.180
HLMCP-R12-8PL	0.437-0.562	0.588	2.243
HLMCP-R12-9PL	0.500-0.625	0.650	2.305

Recommended Usage
For exterior use against bottom rails, corner posts, top rails, panel surface and other exterior applications where fastener is bearing against metal surface.

Compatible Sleeves
HLMCSC-R12
HLMCSC-R12

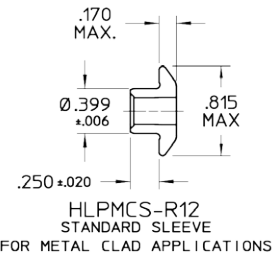
MC Clearance Head Sleeve

Part Number	Recommended Usage
HLMCSC-R12	Clearance Head, for interior use in Logistics track type applications where head diameter clearance is needed.

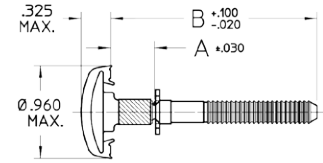


MC Medium Bearing Head Sleeve

Part Number	Recommended Usage
HLMCS-R12	Medium Bearing Head, for use against interior rails and panel surfaces.



HLMC Pins for Metal Clad Applications



HLMC(*)-R12-()PL
MEDIUM BEARING ENCAPSULATED HEAD
FOR METAL CLAD APPLICATIONS

Grey Encapsulated Head

Part Number	Grip Range	"A"	"B"	Recommended Usage	Compatible Sleeves
HLMCG-R12-4PL	0.187-0.312	0.338	1.993	For exterior use against bottom rails, corner posts, top rails, panel surface and other exterior applications where fastener is bearing against metal surfaces that are metallic grey in color.	HLMCS-R12 HLMCSC-R12
HLMCG-R12-5PL	0.250-0.375	0.400	2.055		
HLMCG-R12-6PL	0.312-0.437	0.462	2.118		
HLMCG-R12-7PL	0.375-0.500	0.525	2.180		
HLMCG-R12-8PL	0.437-0.562	0.588	2.243		

White Encapsulated Head

Part Number	Grip Range	"A"	"B"	Recommended Usage	Compatible Sleeves
HLMCW-R12-4PL	0.187-0.312	0.338	1.993	For exterior use against bottom rails, corner posts, top rails, panel surface and other exterior applications where fastener is bearing against metal surfaces that are white in color.	HLMCS-R12 HLMCSC-R12
HLMCW-R12-5PL	0.250-0.375	0.400	2.055		
HLMCW-R12-6PL	0.312-0.437	0.462	2.118		
HLMCW-R12-7PL	0.375-0.500	0.525	2.180		
HLMCW-R12-8PL	0.437-0.562	0.588	2.243		

Hertz/Penske Yellow Encapsulated Head

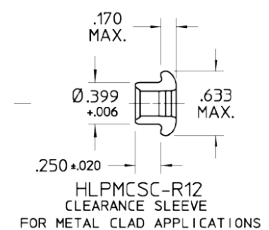
Part Number	Grip Range	"A"	"B"	Recommended Usage	Compatible Sleeves
HLMCHY-R12-4PL	0.187-0.312	0.338	1.993	For exterior use against bottom rails, corner posts, top rails, panel surface and other exterior applications where fastener is bearing against metal surfaces that are Hertz/Penske Yellow in color.	HLMCS-R12 HLMCSC-R12
HLMCHY-R12-5PL	0.250-0.375	0.400	2.055		
HLMCHY-R12-6PL	0.312-0.437	0.462	2.118		
HLMCHY-R12-7PL	0.375-0.500	0.525	2.180		
HLMCHY-R12-8PL	0.437-0.562	0.588	2.243		

Yellow Encapsulated Head

Part Number	Grip Range	"A"	"B"	Recommended Usage	Compatible Sleeves
HLMCRY-R12-4PL	0.187-0.312	0.338	1.993	For exterior use against bottom rails, corner posts, top rails, panel surface and other exterior applications where fastener is bearing against metal surfaces that are Yellow in color.	HLMCS-R12 HLMCSC-R12
HLMCRY-R12-5PL	0.250-0.375	0.400	2.055		
HLMCRY-R12-6PL	0.312-0.437	0.462	2.118		
HLMCRY-R12-7PL	0.375-0.500	0.525	2.180		
HLMCRY-R12-8PL	0.437-0.562	0.588	2.243		

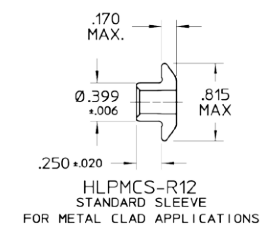
MC Clearance Head Sleeve

Part Number	Recommended Usage
HLMCSC-R12	Clearance Head, for interior use in Logistics track type applications where head diameter clearance is needed.



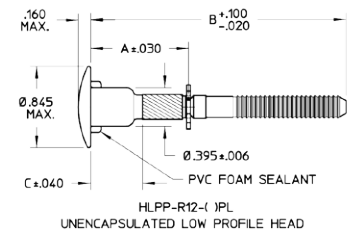
MC Medium Bearing Head Sleeve

Part Number	Recommended Usage
HLMCS-R12	Medium Bearing Head, for use against interior rails and panel surfaces.



Hucktainer® Pins

Standard HLP Pins for FRP Applications



Steel Head, No Encapsulation, with PVC Seal

Part Number	Grip Range	"A"	"B"
HLPP-R12-10PL	0.562-0.687	0.625	2.232
HLPP-R12-11PL	0.625-0.750	0.687	2.295
HLPP-R12-12PL	0.687-0.812	0.750	2.357
HLPP-R12-13PL	0.750-0.875	0.812	2.420
HLPP-R12-14PL	0.812-0.937	0.875	2.482
HLPP-R12-15PL	0.875-1.000	0.937	2.545
HLPP-R12-16PL	0.937-1.062	1.000	2.607
HLPP-R12-17PL	1.000-1.125	1.062	2.670
HLPP-R12-18PL	1.062-1.187	1.125	2.732
HLPP-R12-19PL	1.125-1.250	1.187	2.795
HLPP-R12-20PL	1.187-1.312	1.250	2.857
HLPP-R12-21PL	1.250-1.375	1.312	2.920
HLPP-R12-22PL	1.312-1.437	1.375	2.982
HLPP-R12-23PL	1.375-1.500	1.437	3.045
HLPP-R12-24PL	1.437-1.562	1.500	3.107
HLPP-R12-25PL	1.500-1.625	1.562	3.170
HLPP-R12-26PL	1.562-1.687	1.625	3.232
HLPP-R12-27PL	1.625-1.750	1.687	3.295
HLPP-R12-28PL	1.687-1.812	1.750	3.357
HLPP-R12-29PL	1.750-1.875	1.812	3.420

Recommended Usage

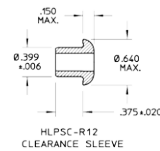
For exterior use against bottom rails, corner posts, top rails, and other exterior applications where fastener is bearing against metal surfaces.

Compatible Sleeves

HLPSC-R12
HLPMS-R12
HLPS-R12
HLPTS-R12

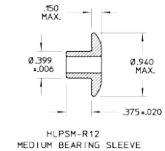
Standard HLP Clearance Head Sleeve

Part Number	Recommended Usage
HLPSC-R12	Clearance Head, for use in Logistics track type applications where head diameter clearance is needed.



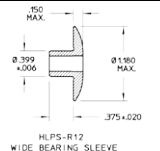
Standard HLP Medium Bearing Sleeve

Part Number	Recommended Usage
HLPMS-R12	Medium Bearing Head, for use against interior bottom rails and other interior applications where fastener is bearing against metal surface.



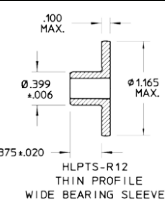
Standard HLP Wide Bearing Sleeve

Part Number	Recommended Usage
HLPS-R12	Large Bearing Head, for use against interior or FRP surfaces. Distributes clamp load to avoid gel coat crazing.

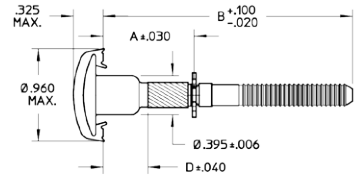


Standard HLP Thin Profile Sleeve

Part Number	Recommended Usage
HLPTS-R12	Large Bearing Head with thin profile, for use against interior FRP surfaces. Distributes clamp load to avoid gel coat crazing. Thin profile allows for application of scuff liner over head surface.



Standard HLP Pins for FRP Applications



HLP(M*)-R12-()PL
MEDIUM BEARING ENCAPSULATED HEAD

Grey Medium Bearing Encapsulated Head

Part Number	Grip Range	"A"	"B"
HLP(M*)-R12-9PL	0.500-0.625	0.562	2.170
HLP(M*)-R12-10PL	0.562-0.687	0.625	2.232
HLP(M*)-R12-11PL	0.625-0.750	0.687	2.295
HLP(M*)-R12-12PL	0.687-0.812	0.750	2.357
HLP(M*)-R12-13PL	0.750-0.875	0.812	2.420
HLP(M*)-R12-14PL	0.812-0.937	0.875	2.482
HLP(M*)-R12-15PL	0.875-1.000	0.937	2.545
HLP(M*)-R12-16PL	0.937-1.062	1.000	2.607
HLP(M*)-R12-17PL	1.000-1.125	1.062	2.670
HLP(M*)-R12-18PL	1.062-1.187	1.125	2.732
HLP(M*)-R12-19PL	1.125-1.250	1.187	2.795
HLP(M*)-R12-20PL	1.187-1.312	1.250	2.857
HLP(M*)-R12-21PL	1.250-1.375	1.312	2.920
HLP(M*)-R12-22PL	1.312-1.437	1.375	2.982
HLP(M*)-R12-23PL	1.375-1.500	1.437	3.045
HLP(M*)-R12-24PL	1.437-1.562	1.500	3.107
HLP(M*)-R12-25PL	1.500-1.625	1.562	3.170
HLP(M*)-R12-26PL	1.562-1.687	1.625	3.232
HLP(M*)-R12-27PL	1.625-1.750	1.687	3.295
HLP(M*)-R12-28PL	1.687-1.812	1.750	3.357
HLP(M*)-R12-29PL	1.750-1.875	1.812	3.420

Recommended Usage

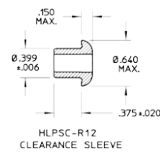
For exterior use against bottom rails, corner posts, top rails, and other exterior applications where fastener is bearing against metal surfaces that are metallic grey in color.

Compatible Sleeves

HLPSC-R12
HLP(M*)-R12
HLP(S*)-R12
HLP(TS*)-R12

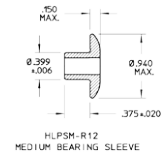
Standard HLP Clearance Head Sleeve

Part Number	Recommended Usage
HLPSC-R12	Clearance Head, for use in Logistics track type applications where head diameter clearance is needed.



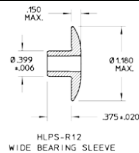
Standard HLP Medium Bearing Sleeve

Part Number	Recommended Usage
HLP(M*)-R12	Medium Bearing Head, for use against interior bottom rails and other interior applications where fastener is bearing against metal surface.



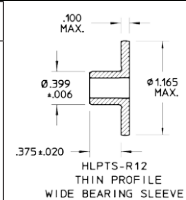
Standard HLP Wide Bearing Sleeve

Part Number	Recommended Usage
HLP(S*)-R12	Large Bearing Head, for use against interior FRP surfaces. Distributes clamp load to avoid gel coat crazing.

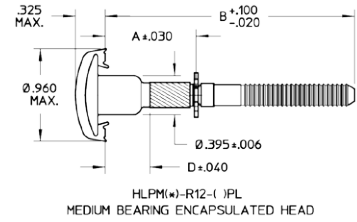


Standard HLP Thin Profile Sleeve

Part Number	Recommended Usage
HLP(TS*)-R12	Large Bearing Head with thin profile, for use against interior FRP surfaces. Distributes clamp load to avoid gel coat crazing. Thin profile allows for application of scuff liner over head surface.



Standard HLP Pins for FRP Applications

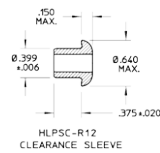


White Medium Bearing Encapsulated Head

Part Number	Grip Range	"A"	"B"	Recommended Usage	Compatible Sleeves
HLPMW-R12-9PL	0.500-0.625	0.562	2.170	For exterior use against bottom rails, corner posts, top rails, and other exterior applications where fastener is bearing against metal surfaces that are white in color.	HLPSC-R12 HLPSP-R12 HLPSS-R12 HLPTS-R12
HLPMW-R12-10PL	0.562-0.687	0.625	2.232		
HLPMW-R12-11PL	0.625-0.750	0.687	2.295		
HLPMW-R12-12PL	0.687-0.812	0.750	2.357		
HLPMW-R12-13PL	0.750-0.875	0.812	2.420		
HLPMW-R12-14PL	0.812-0.937	0.875	2.482		
HLPMW-R12-15PL	0.875-1.000	0.937	2.545		
HLPMW-R12-16PL	0.937-1.062	1.000	2.607		
HLPMW-R12-17PL	1.000-1.125	1.062	2.670		
HLPMW-R12-18PL	1.062-1.187	1.125	2.732		
HLPMW-R12-19PL	1.125-1.250	1.187	2.795		
HLPMW-R12-20PL	1.187-1.312	1.250	2.857		
HLPMW-R12-21PL	1.250-1.375	1.312	2.920		
HLPMW-R12-22PL	1.312-1.437	1.375	2.982		
HLPMW-R12-23PL	1.375-1.500	1.437	3.045		
HLPMW-R12-24PL	1.437-1.562	1.500	3.107		
HLPMW-R12-25PL	1.500-1.625	1.562	3.170		
HLPMW-R12-26PL	1.562-1.687	1.625	3.232		
HLPMW-R12-27PL	1.625-1.750	1.687	3.295		
HLPMW-R12-28PL	1.687-1.812	1.750	3.357		
HLPMW-R12-29PL	1.750-1.875	1.812	3.420		

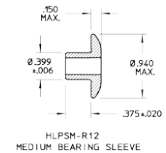
Standard HLP Clearance Head Sleeve

Part Number	Recommended Usage
HLPSC-R12	Clearance Head, for use in Logistics track type applications where head diameter clearance is needed.



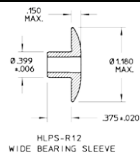
Standard HLP Medium Bearing Sleeve

Part Number	Recommended Usage
HLPSM-R12	Medium Bearing Head, for use against interior bottom rails and other interior applications where fastener is bearing against metal surface.



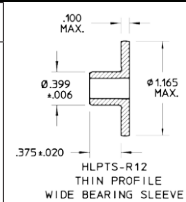
Standard HLP Wide Bearing Sleeve

Part Number	Recommended Usage
HLPSS-R12	Large Bearing Head, for use against interior FRP surfaces. Distributes clamp load to avoid gel coat crazing.

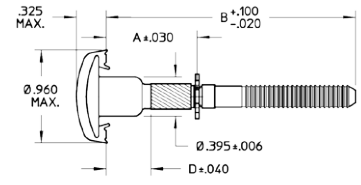


Standard HLP Thin Profile Sleeve

Part Number	Recommended Usage
HLPTS-R12	Large Bearing Head with thin profile, for use against interior FRP surfaces. Distributes clamp load to avoid gel coat crazing. Thin profile allows for application of scuff liner over head surface.



Standard HLP Pins for FRP Applications



HLP(M)-R12-()PL
MEDIUM BEARING ENCAPSULATED HEAD

Hertz/Penske Yellow Medium Bearing Encapsulated Head

Part Number	Grip Range	"A"	"B"
HLPMHY-R12-9PL	0.500-0.625	0.562	2.170
HLPMHY-R12-10PL	0.562-0.687	0.625	2.232
HLPMHY-R12-11PL	0.625-0.750	0.687	2.295
HLPMHY-R12-12PL	0.687-0.812	0.750	2.357
HLPMHY-R12-13PL	0.750-0.875	0.812	2.420
HLPMHY-R12-14PL	0.812-0.937	0.875	2.482
HLPMHY-R12-15PL	0.875-1.000	0.937	2.545
HLPMHY-R12-16PL	0.937-1.062	1.000	2.607
HLPMHY-R12-17PL	1.000-1.125	1.062	2.670
HLPMHY-R12-18PL	1.062-1.187	1.125	2.732
HLPMHY-R12-19PL	1.125-1.250	1.187	2.795
HLPMHY-R12-20PL	1.187-1.312	1.250	2.857
HLPMHY-R12-21PL	1.250-1.375	1.312	2.920
HLPMHY-R12-22PL	1.312-1.437	1.375	2.982
HLPMHY-R12-23PL	1.375-1.500	1.437	3.045
HLPMHY-R12-24PL	1.437-1.562	1.500	3.107
HLPMHY-R12-25PL	1.500-1.625	1.562	3.170
HLPMHY-R12-26PL	1.562-1.687	1.625	3.232
HLPMHY-R12-27PL	1.625-1.750	1.687	3.295
HLPMHY-R12-28PL	1.687-1.812	1.750	3.357
HLPMHY-R12-29PL	1.750-1.875	1.812	3.420

Recommended Usage

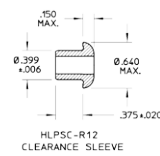
For exterior use against bottom rails, corner posts, top rails, and other exterior applications where fastener is bearing against metal surfaces that are Hertz/Penske Yellow in color.

Compatible Sleeves

HLPSC-R12
HLPMS-R12
HLPS-R12
HLPTS-R12

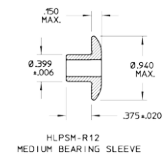
Standard HLP Clearance Head Sleeve

Part Number	Recommended Usage
HLPSC-R12	Clearance Head, for use in Logistics track type applications where head diameter clearance is needed.



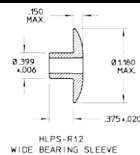
Standard HLP Medium Bearing Sleeve

Part Number	Recommended Usage
HLPMS-R12	Medium Bearing Head, for use against interior bottom rails and other interior applications where fastener is bearing against metal surface.



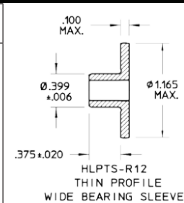
Standard HLP Wide Bearing Sleeve

Part Number	Recommended Usage
HLPS-R12	Large Bearing Head, for use against interior FRP surfaces. Distributes clamp load to avoid gel coat crazing.

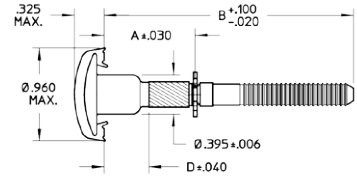


Standard HLP Thin Profile Sleeve

Part Number	Recommended Usage
HLPTS-R12	Large Bearing Head with thin profile, for use against interior FRP surfaces. Distributes clamp load to avoid gel coat crazing. Thin profile allows for application of scuff liner over head surface.



Standard HLP Pins for FRP Applications



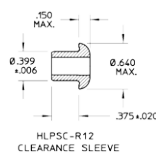
HLP(M*)-R12-I JPL
MEDIUM BEARING ENCAPSULATED HEAD

Yellow Medium Bearing Encapsulated Head

Part Number	Grip Range	"A"	"B"	Recommended Usage	Compatible Sleeves
HLPMPRY-R12-9PL	0.500-0.625	0.562	2.170	For exterior use against bottom rails, corner posts, top rails, and other exterior applications where fastener is bearing against metal surfaces that are Yellow in color.	HLPSC-R12 HLPSP-R12 HLPS-R12 HLPTS-R12
HLPMPRY-R12-10PL	0.562-0.687	0.625	2.232		
HLPMPRY-R12-11PL	0.625-0.750	0.687	2.295		
HLPMPRY-R12-12PL	0.687-0.812	0.750	2.357		
HLPMPRY-R12-13PL	0.750-0.875	0.812	2.420		
HLPMPRY-R12-14PL	0.812-0.937	0.875	2.482		
HLPMPRY-R12-15PL	0.875-1.000	0.937	2.545		
HLPMPRY-R12-16PL	0.937-1.062	1.000	2.607		
HLPMPRY-R12-17PL	1.000-1.125	1.062	2.670		
HLPMPRY-R12-18PL	1.062-1.187	1.125	2.732		
HLPMPRY-R12-19PL	1.125-1.250	1.187	2.795		
HLPMPRY-R12-20PL	1.187-1.312	1.250	2.857		
HLPMPRY-R12-21PL	1.250-1.375	1.312	2.920		
HLPMPRY-R12-22PL	1.312-1.437	1.375	2.982		
HLPMPRY-R12-23PL	1.375-1.500	1.437	3.045		
HLPMPRY-R12-24PL	1.437-1.562	1.500	3.107		
HLPMPRY-R12-25PL	1.500-1.625	1.562	3.170		
HLPMPRY-R12-26PL	1.562-1.687	1.625	3.232		
HLPMPRY-R12-27PL	1.625-1.750	1.687	3.295		
HLPMPRY-R12-28PL	1.687-1.812	1.750	3.357		
HLPMPRY-R12-29PL	1.750-1.875	1.812	3.420		

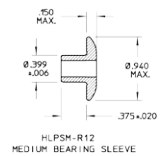
Standard HLP Clearance Head Sleeve

Part Number	Recommended Usage
HLPSC-R12	Clearance Head, for use in Logistics track type applications where head diameter clearance is needed.



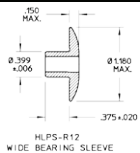
Standard HLP Medium Bearing Sleeve

Part Number	Recommended Usage
HLPSM-R12	Medium Bearing Head, for use against interior bottom rails and other interior applications where fastener is bearing against metal surface.



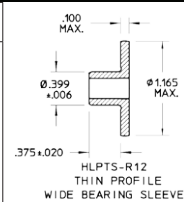
Standard HLP Wide Bearing Sleeve

Part Number	Recommended Usage
HLPS-R12	Large Bearing Head, for use against interior or FRP surfaces. Distributes clamp load to avoid gel coat crazing.

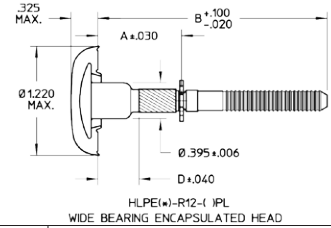


Standard HLP Thin Profile Sleeve

Part Number	Recommended Usage
HLPTS-R12	Large Bearing Head with thin profile, for use against interior FRP surfaces. Distributes clamp load to avoid gel coat crazing. Thin profile allows for application of scuff liner over head surface.



Standard HLP Pins for FRP Applications



Grey Wide Bearing Encapsulated Head

Part Number	Grip Range	"A"	"B"
HLPEG-R12-9PL	0.500-0.625	0.562	2.170
HLPEG-R12-10PL	0.562-0.687	0.625	2.232
HLPEG-R12-11PL	0.625-0.750	0.687	2.295
HLPEG-R12-12PL	0.687-0.812	0.750	2.357
HLPEG-R12-13PL	0.750-0.875	0.812	2.420
HLPEG-R12-14PL	0.812-0.937	0.875	2.482
HLPEG-R12-15PL	0.875-1.000	0.937	2.545
HLPEG-R12-16PL	0.937-1.062	1.000	2.607
HLPEG-R12-17PL	1.000-1.125	1.062	2.670
HLPEG-R12-18PL	1.062-1.187	1.125	2.732
HLPEG-R12-19PL	1.125-1.250	1.187	2.795
HLPEG-R12-20PL	1.187-1.312	1.250	2.857
HLPEG-R12-21PL	1.250-1.375	1.312	2.920
HLPEG-R12-22PL	1.312-1.437	1.375	2.982
HLPEG-R12-23PL	1.375-1.500	1.437	3.045
HLPEG-R12-24PL	1.437-1.562	1.500	3.107
HLPEG-R12-25PL	1.500-1.625	1.562	3.170
HLPEG-R12-26PL	1.562-1.687	1.625	3.232
HLPEG-R12-27PL	1.625-1.750	1.687	3.295
HLPEG-R12-28PL	1.687-1.812	1.750	3.357
HLPEG-R12-29PL	1.750-1.875	1.812	3.420

Recommended Usage

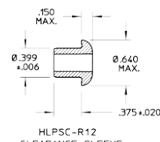
For exterior use against FRP Panels that are metallic grey in color. Wide bearing encapsulated head helps to distribute clamp load to avoid dimpling or crazing of surface.

Compatible Sleeves

HLPSC-R12
 HLPSP-R12
 HLPSS-R12
 HLPTS-R12

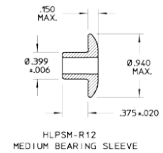
Standard HLP Clearance Head Sleeve

Part Number	Recommended Usage
HLPSC-R12	Clearance Head, for use in Logistics track type applications where head diameter clearance is needed.



Standard HLP Medium Bearing Sleeve

Part Number	Recommended Usage
HLPSM-R12	Medium Bearing Head, for use against interior bottom rails and other interior applications where fastener is bearing against metal surface.



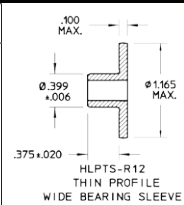
Standard HLP Wide Bearing Sleeve

Part Number	Recommended Usage
HLPS-R12	Large Bearing Head, for use against interior FRP surfaces. Distributes clamp load to avoid gel coat crazing.

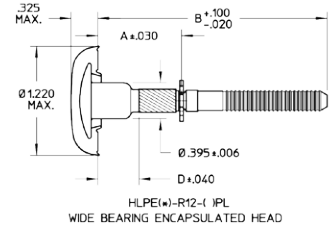


Standard HLP Thin Profile Sleeve

Part Number	Recommended Usage
HLPTS-R12	Large Bearing Head with thin profile, for use against interior FRP surfaces. Distributes clamp load to avoid gel coat crazing. Thin profile allows for application of scuff liner over head surface.



Standard HLP Pins for FRP Applications



White Wide Bearing Encapsulated Head

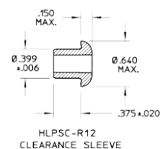
Part Number	Grip Range	"A"	"B"
HLPEW-R12-9PL	0.500-0.625	0.562	2.170
HLPEW-R12-10PL	0.562-0.687	0.625	2.232
HLPEW-R12-11PL	0.625-0.750	0.687	2.295
HLPEW-R12-12PL	0.687-0.812	0.750	2.357
HLPEW-R12-13PL	0.750-0.875	0.812	2.420
HLPEW-R12-14PL	0.812-0.937	0.875	2.482
HLPEW-R12-15PL	0.875-1.000	0.937	2.545
HLPEW-R12-16PL	0.937-1.062	1.000	2.607
HLPEW-R12-17PL	1.000-1.125	1.062	2.670
HLPEW-R12-18PL	1.062-1.187	1.125	2.732
HLPEW-R12-19PL	1.125-1.250	1.187	2.795
HLPEW-R12-20PL	1.187-1.312	1.250	2.857
HLPEW-R12-21PL	1.250-1.375	1.312	2.920
HLPEW-R12-22PL	1.312-1.437	1.375	2.982
HLPEW-R12-23PL	1.375-1.500	1.437	3.045
HLPEW-R12-24PL	1.437-1.562	1.500	3.107
HLPEW-R12-25PL	1.500-1.625	1.562	3.170
HLPEW-R12-26PL	1.562-1.687	1.625	3.232
HLPEW-R12-27PL	1.625-1.750	1.687	3.295
HLPEW-R12-28PL	1.687-1.812	1.750	3.357
HLPEW-R12-29PL	1.750-1.875	1.812	3.420

For exterior use against FRP Panels that are white in color. Wide bearing encapsulated head helps to distribute clamp load to avoid dimpling or crazing of surface.

HLPSC-R12
HLPSP-R12
HLPS-R12
HLPTS-R12

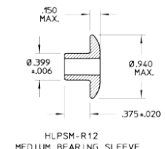
Standard HLP Clearance Head Sleeve

Part Number	Recommended Usage
HLPSC-R12	Clearance Head, for use in Logistics track type applications where head diameter clearance is needed.



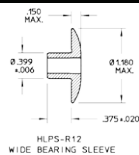
Standard HLP Medium Bearing Sleeve

Part Number	Recommended Usage
HLPSP-R12	Medium Bearing Head, for use against interior bottom rails and other interior applications where fastener is bearing against metal surface.



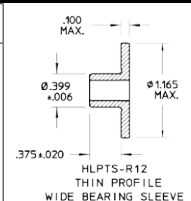
Standard HLP Wide Bearing Sleeve

Part Number	Recommended Usage
HLPS-R12	Large Bearing Head, for use against interior FRP surfaces. Distributes clamp load to avoid gel coat crazing.

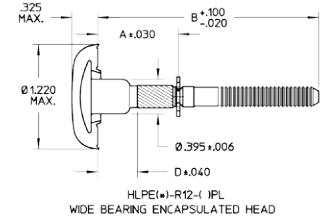


Standard HLP Thin Profile Sleeve

Part Number	Recommended Usage
HLPTS-R12	Large Bearing Head with thin profile, for use against interior FRP surfaces. Distributes clamp load to avoid gel coat crazing. Thin profile allows for application of scuff liner over head surface.



Standard HLP Pins for FRP Applications



Hertz/Penske Yellow Wide Bearing Encapsulated Head

Part Number	Grip Range	"A"	"B"
HLPEHY-R12-9PL	0.500-0.625	0.562	2.170
HLPEHY-R12-10PL	0.562-0.687	0.625	2.232
HLPEHY-R12-11PL	0.625-0.750	0.687	2.295
HLPEHY-R12-12PL	0.687-0.812	0.750	2.357
HLPEHY-R12-13PL	0.750-0.875	0.812	2.420
HLPEHY-R12-14PL	0.812-0.937	0.875	2.482
HLPEHY-R12-15PL	0.875-1.000	0.937	2.545
HLPEHY-R12-16PL	0.937-1.062	1.000	2.607
HLPEHY-R12-17PL	1.000-1.125	1.062	2.670
HLPEHY-R12-18PL	1.062-1.187	1.125	2.732
HLPEHY-R12-19PL	1.125-1.250	1.187	2.795
HLPEHY-R12-20PL	1.187-1.312	1.250	2.857
HLPEHY-R12-21PL	1.250-1.375	1.312	2.920
HLPEHY-R12-22PL	1.312-1.437	1.375	2.982
HLPEHY-R12-23PL	1.375-1.500	1.437	3.045
HLPEHY-R12-24PL	1.437-1.562	1.500	3.107
HLPEHY-R12-25PL	1.500-1.625	1.562	3.170
HLPEHY-R12-26PL	1.562-1.687	1.625	3.232
HLPEHY-R12-27PL	1.625-1.750	1.687	3.295
HLPEHY-R12-28PL	1.687-1.812	1.750	3.357
HLPEHY-R12-29PL	1.750-1.875	1.812	3.420

Recommended Usage

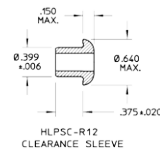
For exterior use against FRP Panels that are Hertz/Penske Yellow in color. Wide bearing encapsulated head helps to distribute clamp load to avoid dimpling or crazing of surface.

Compatible Sleeves

HLPSC-R12
HLPSCM-R12
HLPS-R12
HLPTS-R12

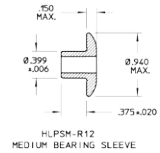
Standard HLP Clearance Head Sleeve

Part Number	Recommended Usage
HLPSC-R12	Clearance Head, for use in Logistics track type applications where head diameter clearance is needed.



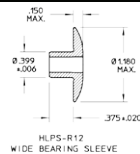
Standard HLP Medium Bearing Sleeve

Part Number	Recommended Usage
HLPSCM-R12	Medium Bearing Head, for use against interior bottom rails and other interior applications where fastener is bearing against metal surface.



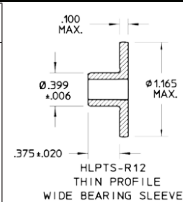
Standard HLP Wide Bearing Sleeve

Part Number	Recommended Usage
HLPS-R12	Large Bearing Head, for use against interior or FRP surfaces. Distributes clamp load to avoid gel coat crazing.

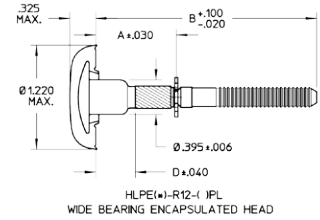


Standard HLP Thin Profile Sleeve

Part Number	Recommended Usage
HLPTS-R12	Large Bearing Head with thin profile, for use against interior FRP surfaces. Distributes clamp load to avoid gel coat crazing. Thin profile allows for application of scuff liner over head surface.



Standard HLP Pins for FRP Applications



Yellow Wide Bearing Encapsulated Head

Part Number	Grip Range	"A"	"B"
HLPERY-R12-9PL	0.500-0.625	0.562	2.170
HLPERY-R12-10PL	0.562-0.687	0.625	2.232
HLPERY-R12-11PL	0.625-0.750	0.687	2.295
HLPERY-R12-12PL	0.687-0.812	0.750	2.357
HLPERY-R12-13PL	0.750-0.875	0.812	2.420
HLPERY-R12-14PL	0.812-0.937	0.875	2.482
HLPERY-R12-15PL	0.875-1.000	0.937	2.545
HLPERY-R12-16PL	0.937-1.062	1.000	2.607
HLPERY-R12-17PL	1.000-1.125	1.062	2.670
HLPERY-R12-18PL	1.062-1.187	1.125	2.732
HLPERY-R12-19PL	1.125-1.250	1.187	2.795
HLPERY-R12-20PL	1.187-1.312	1.250	2.857
HLPERY-R12-21PL	1.250-1.375	1.312	2.920
HLPERY-R12-22PL	1.312-1.437	1.375	2.982
HLPERY-R12-23PL	1.375-1.500	1.437	3.045
HLPERY-R12-24PL	1.437-1.562	1.500	3.107
HLPERY-R12-25PL	1.500-1.625	1.562	3.170
HLPERY-R12-26PL	1.562-1.687	1.625	3.232
HLPERY-R12-27PL	1.625-1.750	1.687	3.295
HLPERY-R12-28PL	1.687-1.812	1.750	3.357
HLPERY-R12-29PL	1.750-1.875	1.812	3.420

Recommended Usage

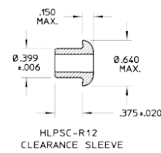
For exterior use against FRP Panels that are Yellow in color. Wide bearing encapsulated head helps to distribute clamp load to avoid dimpling or crazing of surface.

Compatible Sleeves

HLPSC-R12
HLPSM-R12
HLPS-R12
HLPTS-R12

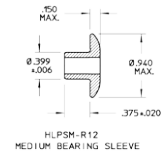
Standard HLP Clearance Head Sleeve

Part Number	Recommended Usage
HLPSC-R12	Clearance Head, for use in Logistics track type applications where head diameter clearance is needed.



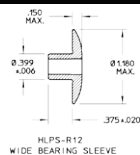
Standard HLP Medium Bearing Sleeve

Part Number	Recommended Usage
HLPSM-R12	Medium Bearing Head, for use against interior bottom rails and other interior applications where fastener is bearing against metal surface.



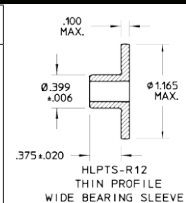
Standard HLP Wide Bearing Sleeve

Part Number	Recommended Usage
HLPS-R12	Large Bearing Head, for use against interior or FRP surfaces. Distributes clamp load to avoid gel coat crazing.

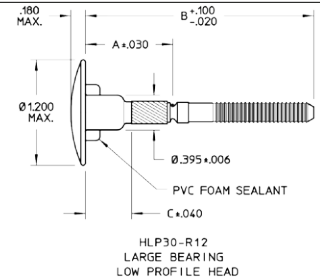


Standard HLP Thin Profile Sleeve

Part Number	Recommended Usage
HLPTS-R12	Large Bearing Head with thin profile, for use against interior FRP surfaces. Distributes clamp load to avoid gel coat crazing. Thin profile allows for application of scuff liner over head surface.



Standard HLP Pins for FRP Applications



Wide Bearing Steel Head

Part Number	Grip Range	"A"	"B"
HLP30-R12-10PL	0.562-0.687	0.625	2.232
HLP30-R12-11PL	0.625-0.750	0.687	2.295
HLP30-R12-12PL	0.687-0.812	0.750	2.357
HLP30-R12-13PL	0.750-0.875	0.812	2.420
HLP30-R12-14PL	0.812-0.937	0.875	2.482
HLP30-R12-15PL	0.875-1.000	0.937	2.545
HLP30-R12-16PL	0.937-1.062	1.000	2.607
HLP30-R12-17PL	1.000-1.125	1.062	2.670
HLP30-R12-18PL	1.062-1.187	1.125	2.732
HLP30-R12-19PL	1.125-1.250	1.187	2.795
HLP30-R12-20PL	1.187-1.312	1.250	2.857
HLP30-R12-21PL	1.250-1.375	1.312	2.920
HLP30-R12-22PL	1.312-1.437	1.375	2.982
HLP30-R12-23PL	1.375-1.500	1.437	3.045
HLP30-R12-24PL	1.437-1.562	1.500	3.107
HLP30-R12-25PL	1.500-1.625	1.562	3.170
HLP30-R12-26PL	1.562-1.687	1.625	3.232
HLP30-R12-27PL	1.625-1.750	1.687	3.295
HLP30-R12-28PL	1.687-1.812	1.750	3.357
HLP30-R12-29PL	1.750-1.875	1.812	3.420

Recommended Usage

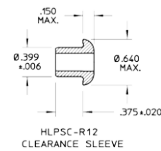
For exterior use against FRP Panels where decals are applied over the fastener head. Wide bearing encapsulated head helps to distribute clamp load to avoid dimpling or crazing of surface. Lower profile head allows decals to adhere and reduce bubbling around head.

Compatible Sleeves

HLPSC-R12
 HLPSPM-R12
 HLPSP-R12
 HLPTS-R12

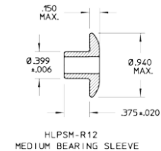
Standard HLP Clearance Head Sleeve

Part Number	Recommended Usage
HLPSC-R12	Clearance Head, for use in Logistics track type applications where head diameter clearance is needed.



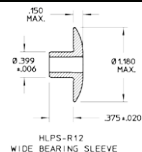
Standard HLP Medium Bearing Sleeve

Part Number	Recommended Usage
HLPSM-R12	Medium Bearing Head, for use against interior bottom rails and other interior applications where fastener is bearing against metal surface.



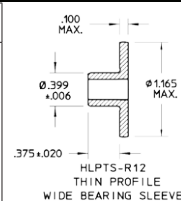
Standard HLP Wide Bearing Sleeve

Part Number	Recommended Usage
HLPS-R12	Large Bearing Head, for use against interior FRP surfaces. Distributes clamp load to avoid gel coat crazing.



Standard HLP Thin Profile Sleeve

Part Number	Recommended Usage
HLPTS-R12	Large Bearing Head with thin profile, for use against interior FRP surfaces. Distributes clamp load to avoid gel coat crazing. Thin profile allows for application of scuff liner over head surface.



Hucktainer® Nose Assemblies

Part Number	Used with Tools		Notes	
99-3464	2025	Air	Standard wide bearing nose, retaining pins keep pins from protruding from end of nose. Non-self releasing.	
	2025S	Air		
	2480	Hydraulic		
Part Number	Used with Tools		Notes	
99-3464-1	2025	Air	Clearance nose for use with clearance sleeves in logistics tracks and other applications where interference is an issue. Non-self releasing.	
	2025S	Air		
	2480	Hydraulic		
Part Number	Used with Tools		Notes	
99-3464L	2025L	Air	Wide bearing nose, for use with long piston tools. Retaining pins keep pins from protruding from end of nose. Non-self releasing.	
	2025SL	Air		
	2480L	Hydraulic		
Part Number	Used with Tools		Notes	
99-3438	245	Air	Standard wide bearing nose, self releasing, pintails pass through both directions without resistance.	
	246	Air		
	255	Air		
	256	Air		
	2580	Hydraulic		

Industrial Fastener Division

8001 Imperial Drive
Waco, TX 76712, USA
P.O. Box 8117
Waco, TX 76714-8117, USA
Tel: 800-388-4825
Fax: 800-798-4825

AFSRHuck.net

[YouTube.com/AFSIndustrial](https://www.youtube.com/AFSIndustrial)



ARCONIC

© 2017 Arconic Fastening Systems and Rings

AF55934 0317